

PROGRAMME OF STUDY: **KS1** – LARCH (YEAR 2)

	AUTUMN TERM		SPRING TERM		SUMMER TERM	
	PART 1	PART 2	PART 1	PART 2	PART 1	PART 2
TERMLY THEME	The Place Where I Live	Fighting Fit	Highway Rat	Explorers	The Wind in The Willows	Buckets and Spades
ENGLISH	Stories with familiar settings Non-chronological reports (Isle of Coll) Poems on a theme	Traditional tales with a twist Instructions	Stories by the same author (Julia Donaldson) Non-chronological reports (animal)	Story as a theme (space) Innovated Story Poems on a theme (space)	Animal Adventure chapter story Recounts: letters	Story as a theme (seaside) Explanation texts Poems on a theme (seaside)
MATHS	Place value Length and mass Addition & Subtraction 2D and 3D shape	Counting Multiplication Statistics Fractions Capacity & Volume Money Time	Place Value Mass Capacity & Volume Addition & Subtraction Money Multiplication & Division	Length Addition & Subtraction 2D and 3D shape Fractions Position & Direction Time	Place Value Statistics Capacity & Volume Temperature Fractions Position & Direction Time 2D and 3D shape	Addition & Subtraction Multiplication & Division Statistics Calculations Measurement
RE	2.1 The Bible: Why is the Bible such a special book? (4+3) Do people of all world faiths have holy books? Islam Judaism Sikhism 2.2 Christmas: Why was the birth of Jesus such good news? (5)		2.5 The Church: Why is the church a special place for Christians? (2+6) Why are holy buildings important to people of faith? Islam Judaism Sikhism 2.4 Easter: How do Symbols help us understand the Easter story? (4)		2.6 Ascension and Pentecost: What happened at the Ascension and Pentecost? (6) S13 Stories with meaning (1+5) What do stories teach us about beliefs and values in other world faiths? Islam Judaism Hinduism Buddhism Sikhism	
SCIENCE	Animals including humans. Lifecycles and Health (Kapow)	Suitability of materials Uses of Everyday Materials (Kapow)	Living things and their habitats Habitats (Kapow)	Plants Plant Growth (Kapow)	Scientific Skills and Thinking/ Sustainability Plant based materials (Kapow)	Living things and their habitat Microhabitats (Kapow)
GEOGRAPHY / HISTORY	Geography: Why is our world wonderful – exploring maps (Kapow)	History: Kings and Castle including Clitheroe Castle (Bespoke)	Geography: What is it like to live in Shanghai? (Kapow)	History: How have explorers changed the world? (Kapow)	History: How have toys changed? (Kapow)	Geography: What is it like to live by the coast? (Kapow)

ART / DESIGN TECHNOLOGY	Design Technology: Food – Preparing fruits and vegetables	Drawing: Tell a story	Design Technology: Textiles – templates and joining techniques	Painting and Mixed Media: Life in Colour	Design Technology: Mechanisms - Wheels and Axle	Sculpture and 3D: Clay House
MUSIC	Musical Me	Orchestral Instruments Theme: Traditional Stories	West African Call and Response Song Theme: Animals	Dynamics, Timbre, Tempo and Motifs Theme: Space	On this Island: British Songs and Sounds	Myths and Legends
COMPUTING	What is a Computer?	Word processing	Algorithms and debugging	International Space Station	Stop motion Option 1: Using tablets (animation)	Programming: Scratch Jr.
PE	Lancashire PE Passport Dance: Once Upon a Giant Fundamental Skills: Playground Games	Lancashire PE Passport Gymnastics: Year 2 Dance: Moving Along	Lancashire PE Passport Dance: Explorers Games: Piggy in the Middle	Lancashire PE Passport Net and Wall: Year 2 Fundamental Skills: Bounce Ball	Lancashire PE Passport Striking and Fielding: Year 2 Year 2 – The Great Outdoors	Lancashire PE Passport Fundamental Skills: End of Key Stage One Assessment Athletics: Year 2
PSHE	Family and Relationships	Health and Wellbeing	Safety and the changing body	Safety and the changing body and Citizenship	Citizenship	Economic Wellbeing, plus Transition and Change
ENRICHMENT OPPORTUNITIES	Poetry Festival	Pantomime Trip Nativity	Poetry Festival Geography fieldwork	World Book Day URC Easter Experience	BarrowFest Poetry Festival	Sports Day Zoo Trip

WHOLE SCHOOL PROGRAMME OF STUDY:

English – Children at Barrow follow the Lancashire County Council Units of Study; however core text can be changed.

Phonics: Children follow Red Rose Letters and Sounds and using a combination of My Letters and Sounds Phonics Readers and Bug Club Reading scheme.

Mathematics – We use White Rose Maths – **NEW** scheme and follow the yearly expectations in the new National Curriculum.

Geography or History are taught alternative half terms. Topics are theme based, rich in knowledge vocabulary and cover the content of the National Curriculum. Kapow is used to support our bespoke curriculum.

Physical Education is taught using the Lancashire PE Passport, with bespoke addition units of study including orienteering, swimming and forest school.

Art – is taught by a skilled based themed approach. Kapow is used to support our bespoke curriculum.

Design Technology - follows the Project on a Page scheme of work (Design and Technology Association).

Religious Education follows our core syllabus 'Questful RE' (developed by Blackburn Diocesan Board of Education) including the study of a world religion.

Science – Is taught using our bespoke stimulating science curriculum, that nurture children's curiosity whilst acquiring specific knowledge and developing key skills. Kapow is used to support our bespoke curriculum.

French - Our bespoke French curriculum is supported and enhanced through Kapow.

PSHE – Our scheme is based upon Safety, Caring, Achievement, resilience and Friendship (Kapow) and is a whole school curriculum developed to promote health and wellbeing.

Music – Our Music curriculum is based upon five strands which run throughout our scheme of work, these are: Performing, Listening, Composing, The History of Music and Inter relational dimension of music. In addition, pupils in Key Stage 2 complete 4 whole class instrumental units, each focusing on a different part of the world. Kapow is used to support our bespoke curriculum.

Computing – Our Computing curriculum is based upon 5 strands which run throughout our scheme of work, these are: Computer Science, Information Technology, Digital Literacy and Online Safety. Kapow is used to support our bespoke curriculum.

Underpinning the curriculum are our own school drivers derived from pupil needs: **Achievement & Aspirations, Diversity, Healthy Advocates, Resilience and Active Citizens.**



ACHIEVEMENTS &
ASPIRATIONS



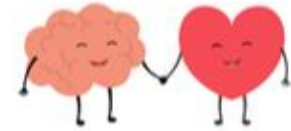
ACTIVE
CITIZENS



DIVERSITY



HEALTHY
ADVOCATES



RESILIENCE